



ORCHID VILLAS

A LUXURY GATED COMMUNITY



Location:- Thindiyur vilakku, Kalikappan Road, Tamil Nadu 625020.

CALL:- 70107 33785



© Modern Homes and Developers


ORCHID
VILLAS

ORCHID'S ENTRANCE

ORCHID'S FACADE



pagam Homes and Developers



Karpathi Homes and Developers

ORCHID'S CLUB HOUSE

Superior Lifestyle Amenities & Features

Orchid's Clubhouse Amenities:-

- ◆ Swimming pool
- ◆ Gym
- ◆ Indoor Games Room
- ◆ Kids Play area
- ◆ Dartboard wall

Outdoor Amenities

- ◆ Entrance Gateway
- ◆ Paver block roads
- ◆ Solar street lights
- ◆ Guest car parking
- ◆ Walking track
- ◆ Landscape amenities
- ◆ Security Cabin
- ◆ Outdoor CCTV Surveillance

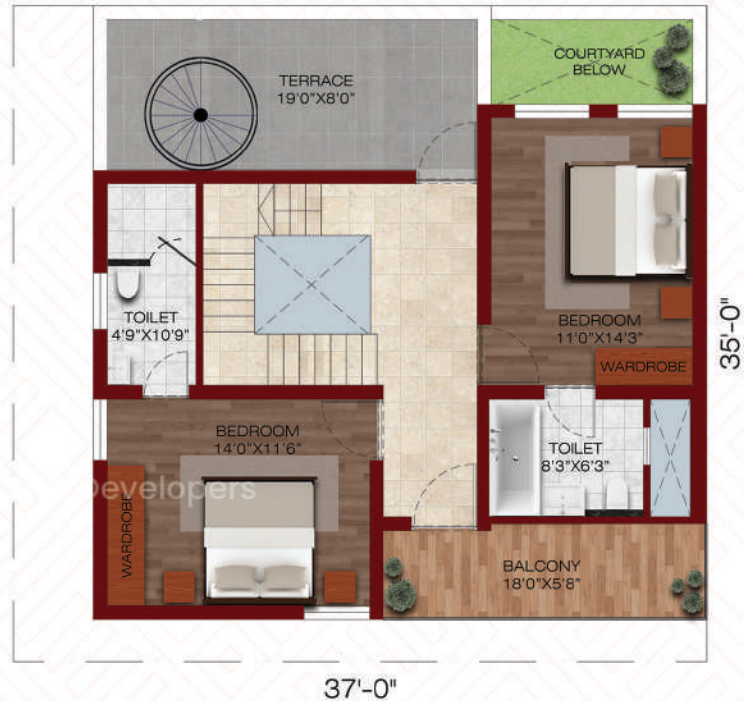


YOGA/MEDITATION


SOUTH FACING
3 BHK VILLA PLANS




South Facing Ground Floor



South Facing First Floor

Villa No	Plot (Sqft)	Ground Floor (Sqft)	First Floor (Sqft)
11 Nos	1905 Sqft	1073 Sqft	829 Sqft

NORTH FACING 4 BHK VILLA PLANS



37'-0"

North Facing Ground Floor



37'-0"

North Facing First Floor

Villa No	Plot (Sqft)	Ground Floor (Sqft)	First Floor (Sqft)	Second Floor (Sqft)
11 Nos	1905 Sqft	1073 Sqft	1012 Sqft	140 Sqft



LIVING ROOM



Kangaroo Homes and Developers

LIVING ROOM



Padam Homes and Developers

COURTYARD



DINING

ORCHID'S AERIAL VIEW





Karpagam Homes and Developers

KITCHEN



Karpagam Homes and Developers

BED ROOM



Karpagam Homes and Developers

HOME THEATER



TT ROOM



SWIMMING POOL



Karpagam Homes and Developers

GYM

SPECIFICATIONS

STRUCTURE

- Structural System** : RCC Framed Structure
- Masonry** : 230mm wire cut Red Bricks for external walls & 115mm for internal walls
- Floor- Floor Height** : Will be maintained at 3050mm
- ATT** : Anti-termite treatment will be done

WALL FINISH

- Internal Walls** : All internal walls will be finished with 2 coats of putty, 1 coat of primer & 2 coats of emulsion
- Ceiling** : Finished with 2 coats of putty, 1 coat of primer & 2 coats of emulsion
- Exterior walls** : Exterior faces of the building finished with 1 coat of primer & 2 coats of exterior emulsion paint with color as per architect design
- Bathroom** : Glazed Vitrified tile up to 3050mm height of size 300x600mm
- Kitchen** : Vitrified wall tile of size 300mm x 600mm for a height of 600mm above the counter top finished level

FLOOR FINISH WITH SKIRTING

- Foyer, living, dining, & kitchen** : Vitrified tiles of size 600mm x 1200mm
- Bathroom** : Anti-skid ceramic tiles of size 300mm x 300mm
- Home theater / Bed Room / Coverd Deck** : Wooden Pattern Vitrified tiles (matt) of size 90mm x 600mm
- Terrace** : Pressed tiles finish
- Private open terrace** : Vitrified tiles (matt) of size 600mm x 600mm
- Car Parking** : Exterior vitrified Tiles 300mm x 300mm

KITCHEN & DINING

- Kitchen** : Platform will be finished with granite slab of 550mm - 600mm wide at height of 800mm from the finished floor level
- Electrical point** : For chimney & water purifier
- CP Fitting** : Parryware / kerovit / Equivalent
- Sink** : Stainless steel sink with drain board
- Dining** : Granite counter-top washbasin wherever applicable
- Utility** : Tap provided



BALCONY/PRIVATE OPEN TERRACE

Handrail : Glass railing as per architect's design



STAIRCASE

Flooring : Granite flooring for staircase

Handrail : Glass railing as per architect's design



BATHROOMS

Sanitary / CP fittings : Parryware / kerovit Brand

Plumbing : All internal pipes 25mm CPVC concealed & 30mm UPVC Pipes

Water tank : 2000 liter - 3 core sintex tank

Bathrooms : wall mounted WC, health faucet, single lever diverter with overhead shower & Wall hung wash basin



JOINERY

DOORS

Main door : Teak door of size 1143mm x 2134 mm frame with teak shutter

: Ironmongeries like lock of Dorma/ equivalent, tower bolts, door viewer, safety latch, door stopper

Bedroom doors : Teak door frame with double side laminated shutter of size 900mm x 2100mm

: Ironmongeries like door lock of Godrej/ equivalent, door stopper, door bush, tower bolt

: Walnut finish fiber doors

WINDOWS

Windows : UPVC windows with sliding shutter with see through plain glass and MS grill on inner side wherever applicable

French Doors : UPVC frame and doors with glass without grills

Ventilators : UPVC frame of fixed/ adjustable louvered



ELECTRICAL POINTS

Power Supply	: 3 phase power supply connection
Safety Device	: MCB & ELCB (Earth leakage Circuit breaker)
Switches & Sockets	: Modular box & modular switches & sockets of Wipro / equivalent
Wires	: Fire Retardant Low Smoke (FRLS) copper wire of a quality IS brand Finolex / equivalent
TV	: Point in living & bedrooms
Mobile charging dock	: Mobile charging dock provided in living & beds
Induction point	: Point provided in the kitchen
Video doorbell	: Provided in the entrance main door
Data	: Point in living and provision in first floor
Split- air conditioner	: Point will be provided all bedrooms
Exhaust fan	: Point will be given in all bathrooms
Geyser	: Geyser point will be provided in all toilets



OUTDOOR FEATURES

Intercom	: Intercom will be provided
Common Back-up	: Inverter power backup for common amenities such as clubhouse & selective common area lighting
Security	: Security booth will be provided at the entrance
Compound Wall	: Site perimeter fenced by compound wall with entry gates for a height of 1800mm/ as per landscape design intent
Landscape	: Suitable landscape at appropriate places in the project
Internal Roads	: Paver block as per architect intent
Driveway	: Convex mirror for safe turning in driveway in/ out



INTERIOR

Wardrobe/T.V Unit/Pooja	: 19mm thick 710 BWP Century Plywood finished with 1mm thick laminate outside and 0.8mm thick laminate inside with soft closer hinge	Lights	: Wipro surface lights
False ceiling	: At Living, Bedrooms and Home theatre	Kitchen	: 19mm thick 710 BWP century plywood finished with 1mm thick laminate outside and 0.8mm thick laminate inside with Olive tandem box, chimney
Curtains/Wallpaper	: Bedrooms and Living		

ORCHID'S SITE PLAN - PHASE 1



- 1 NORTH FACING 3BHK - 11NOS 2 SOUTH FACING 3BHK - 11NOS 3 CLUB HOUSE
- 4 EAST FACING 3BHK - 1NO

Salient Features:-

- ◆ Elegantly Crafted 36 Villas spread across a 2.5-acre expanse
- ◆ Ground Floor + 1st Floor + Terrace design structure
- ◆ Madurai's first elegant luxurious styled Villas
- ◆ Thoughtfully designed boutique community with exclusive 3 BHK & 4 BHK Villas
- ◆ Offers 30+ lifestyle amenities & features that include swimming pool, party hall, gym, Home theatre, children play area & many more
- ◆ 100% Vaastu compliant homes with zero dead space design
- ◆ Surrounded by prominent Companies, educational institutions & Other hubs



Sivaganga Rd

Sivaganga Rd

Sivaganga Rd

Mahatma Montessori School



Arumigu Yoga Narasinga Perumal Thiru Kovil

Mattuthavani Bus Stand



MEENAKSHI MISSION HOSPITAL & RESEARCH CENTRE



Madras High court Madurai bench



Indian Overseas Bank



VELAMMAL GLOBAL SCHOOL

Pandi kovil Ring Rd



Pandi Kovil Temple



Temple City Green Park

NH-38

NH-38

NH-38

Ohhooradi to Thirumangur Rd

Thirumangur Rd

NH-38



Rio Hospital

The Indian Public School Madurai



Vikram Multispeciality Hospital

Happy Kids International PreSchool



Sub Registrar Office North - Madurai



Sri Kaliyamma Kovil



Kalikappan Road

TVS Lakshmi School



Aknu S.Sundar Matriculation School



Thirumohoor Shri Kalameghaperumal Temple



WORKPLACES

EDUCATION

HEALTHCARE

BEST IN LOCAL

- Hcl Technologies - 6.3 Km
- ELCOT IT Park - 6.4 Km
- Aruna Alloys Steels - 3.8 Km
- Honeywell Technology Solutions - 6.8 Km

- TVS Lakshmi School - 2.2 Km
- Mahatma Global Gateway - 2.2 Km
- The Indian Public School - 3.4 Km
- Aknu S.Sundar matriculation School - 600m
- vellamal Global school - 3.3 Km

- Meenakshi Mission Hospital - 6.2 Km
- Vikram Multispeciality Hospital - 3.7 Km
- Preethi Multi speciality Hospital - 6.7 Km
- Appolo Hospital - 6.3 Km
- Auro Lab - 2.1 Km
- Rio Hospital - 4.1 Km

- Madurai Airport - 21 Km
- Mattuthavani Bus Stand - 6.7 Km
- High Court-Madurai Bench - 3.8 Km
- Yoga Narasinga Perumal Thiru Kovil - 4.3 Km
- Thirumohoor Shri Kalamegha perumal Temple - 4.3 Km

ARCHITECT:- WHITE EDGE ARCHITECTS

www.whiteedgearchitects.com



Karpagam Homes & Developers

Office Address:-

70107 33785

karpagamhomesanddevelopers@gmail.com

No: 470, 2nd Floor, 1st West Street, KK Nagar, Madurai - 625020.

Karpagam Homes & Developers

karpagam.homes_and_developers

Site Address:-

86681 17010

Thindiyur vilakku, Kalkappan Road, madurai Tamil Nadu 625020.



ORCHID VILLAS

A LUXURY GATED COMMUNITY